



Classic facade – included



2 + Study



2



2

Seabreeze Features

- Stylish interior design with open floor plan
- Covered alfresco
- Second living space (sitting room)
- Stone benchtops to kitchen
- Built-in robes, including walk-in robe to master suite
- Furniture recess in family/living
- Double garage

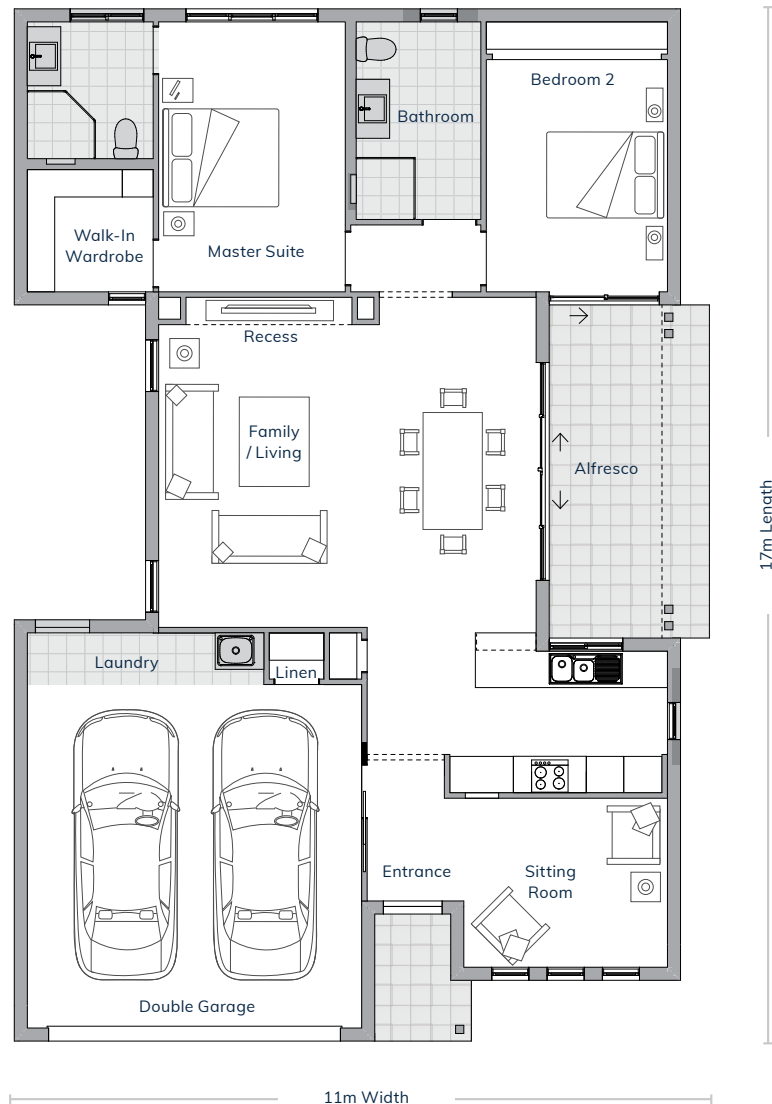


Coastal facade – upgrade option



Hamptons facade – upgrade option

Seabreeze



Family / Living	3600mm x 5400mm
Dining	2600mm x 5400mm
Master Suite	3100mm x 4400mm
Bed 2	3000mm x 3800mm
Sitting Room	3400mm x 2800mm
Double Garage	5500mm x 6500mm
Alfresco	2600mm x 5500mm

This floor plan depicts the **Classic facade** and will differ slightly with various facades.



11.44m



174m²



2+ Study



2



2

Version 22.03.2010 *Refer to price list for current pricing. Prices are subject to availability and are accurate at the time of printing. Prices are subject to change without notice. Standard inclusions apply to list price. Facade render is shown as a guide only. Material finishes shown are purely an expression of the artist and may depict fixtures, finishes and features not supplied by Hometown Australia such as alfresco decking, window and household furnishings and landscaping. Images may also depict optional variations to the house which incur additional charges. Hometown Australia reserve the right to change prices or inclusions without notice. For more detailed home pricing, including details about the standard inclusions for the house and charges for pre-determined optional upgrades, please speak to one of our consultants. Specific details, pricing and dimensions will be included in your contract. All plans are copyright and no part may be reproduced or copied without prior consent from Hometown Australia Management ABN 31 614 529 538.

A new way of living.

HOMETOWN AUSTRALIA
COMMUNITIES