



Classic facade – included



2 + Study



2



2

Avalon Features

- Stylish interior design with open floor plan
- Large second sitting room/study
- Stone benchtops & island bench kitchen
- Coffered feature ceiling to kitchen and dining
- Built-in robes, including walk-in robe to master suite
- Covered alfresco
- Double garage

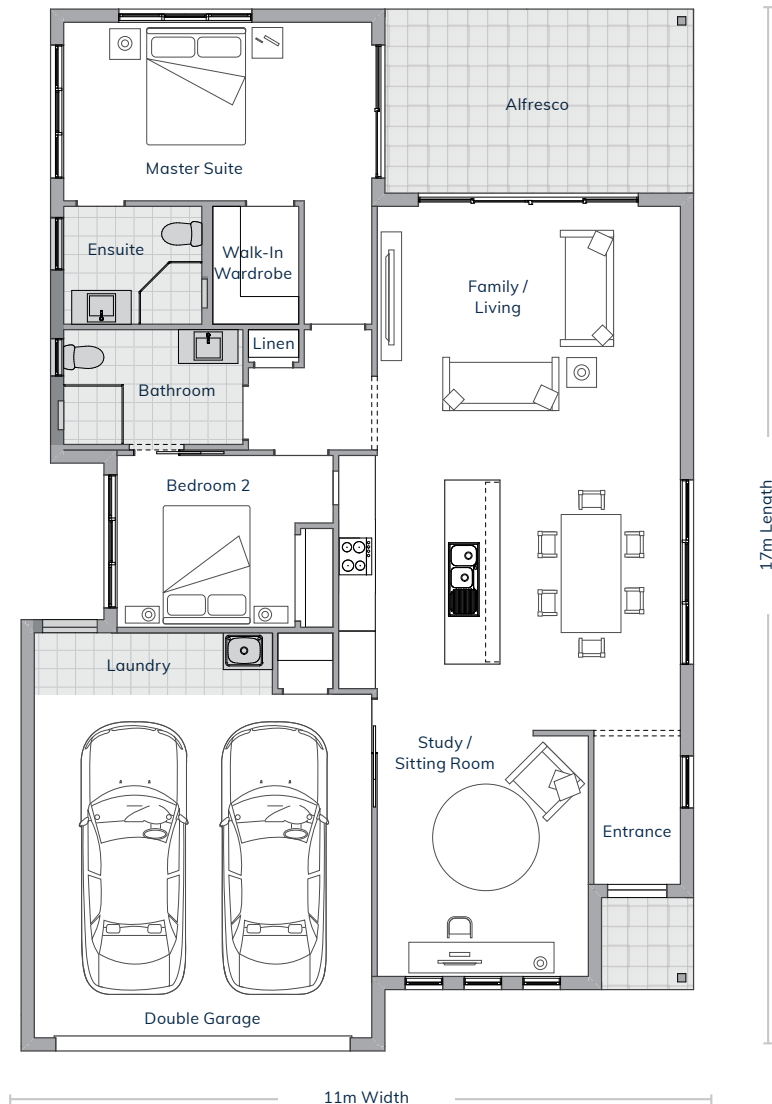


Coastal facade – upgrade option



Hamptons facade – upgrade option

Avalon



Family / Living	4900mm x 4100mm
Dining	4500mm x 2900mm
Master Suite	5000mm x 2900mm
Bed 2	2900mm x 2800mm
Study	3400mm x 3900mm
Double Garage & Laundry	5500mm x 6600mm
Alfresco	5000mm x 3000mm

This floor plan depicts the **Classic facade** and will differ slightly with various facades.



10.96m



175m²



2+ Study



2



2

Version 22.03.2019 *Refer to price list for current pricing. Prices are subject to availability and are accurate at the time of printing. Prices are subject to change without notice. Standard inclusions apply to list price. Facade render is shown as a guide only. Material finishes shown are purely an expression of the artist and may depict fixtures, finishes and features not supplied by Hometown Australia such as alfresco decking, window and household furnishings and landscaping. Images may also depict optional variations to the house which incur additional charges. Hometown Australia reserve the right to change prices or inclusions without notice. For more detailed home pricing, including details about the standard inclusions for the house and charges for pre-determined optional upgrades, please speak to one of our consultants. Specific details, pricing and dimensions will be included in your contract. All plans are copyright and no part may be reproduced or copied without prior consent from Hometown Australia Management ABN 31 614 529 538.

A new way of living.

HOMETOWN AUSTRALIA
COMMUNITIES